

2024

OVERLY

PANEL SYSTEMS®

CELEBRATES ONE YEAR

PUBLICATION

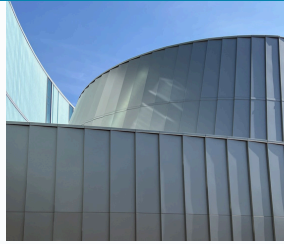


681-327-2445

<https://overlybyecms.net/>

OVERLY
PANEL SYSTEMS BY EAST COAST

OVERLY
PANEL SYSTEMS BY EAST COAST




EAST COAST
METAL SYSTEMS

For more than 135 years, architects nationwide have recognized Overly as a premier supplier of custom metal panels, including the iconic roofs found on structures like the White House in Washington, D.C. The brand has also established itself as one of the leading providers of steeples, such as the one at St. Vincent College in Latrobe, PA, where the Pittsburgh Steelers hold their spring training camp. The Overly brand has built a reputation for exceptional quality and custom craftsmanship that has endured for over a century.

In October 2023, East Coast Metal Systems (“East Coast”), became the exclusive fabricator of Overly panel systems. The Overly products have expanded the premium portfolio of metal panel choices offered by East Coast. East Coast is located in Triadelphia, West Virginia where the Overly by East Coast products are now fabricated, introducing additional customization options for complex projects. “This change has allowed us to tailor the Overly Panel Systems for diverse project needs and has opened up the door to some enhanced partnership opportunities.” – John Trifonoff, Vice President of East Coast Metal Systems

The Overly by East Coast portfolio now includes the Evolution, Bermuda and Batten Seam roof systems, all designed to provide a sleek appearance suitable for walls, roofs, or soffits. It also features rainscreen and wall panel solutions such as the Wet Joint System, Rainscreen XP and Dimension XP. The Rainscreen XP is a removable panel that operates like a plate system, offering an industrial aesthetic. Meanwhile, the Dimension XP is a lightweight wall panel system that allows for faster installation, helping to reduce labor costs. For more details on the features of each panel system, visit the Overly website.

Doug Ott, a former Overly team member of 27 years, Mike Perowski, an Overly team member of 25 years, and Kevin Torrance, an Overly team member of over 22 years, joined the East Coast team to help carry the legacy forward.

"Integrating the Overly products proved to be a fantastic investment, and with Kevin, Mike, and Doug on our team, we were able to hit the ground running rather than tackle a steep learning curve." – Bill Lewis, Pre-Construction Manager

With over seven decades of combined experience, Doug, Mike, and Kevin have successfully led the company through the transition. Mike fondly recalls when he first joined the team, noting that they had more than 40 sheet workers, four draftsmen, a handful of salespeople, and estimators. "25 years later, and you're looking at the core team that has evolved," he shares.

Reflecting on the early days, the trio remembers using handmade tools and mechanical equipment, and they even drafted everything by hand with pencils in the mid to late 1990s. While much has changed since then, the most significant advancement has been the integration of new technologies.

One example of a new technology the team benefits from is East Coast's three-kilowatt fiber laser. This cutting-edge tool supports the team's ability to cut parts faster and with greater precision, shortening lead times and providing a superior final product. The team also now has access to a 25-foot CNC machine that helps reduce bottlenecks and minimizes safety concerns and production costs.

The group is thrilled to be part of the East Coast Metal Systems team, enjoying the advantages of a broader network and new technologies. "It's fantastic to have so many people to collaborate with. Everyone has been incredibly supportive," said Mike. This experience has empowered the team to expand their impact by taking on project management roles, guiding projects from conception to completion. The team is smoothly transitioning and has been able to start building upon the start and longstanding foundation of the Overly brand.

Among the team's most recent projects are the National Medal of Honor Museum in Arlington, Texas, which is scheduled to open in 2025. The museum's unique design will feature the Evolution system and is approximately 2,400 square feet. Another of their recent projects that is soon to be completed is the building at 101 Constitution Ave in Washington, D.C., which features 1,500 square feet of the Batten B system. 101 Constitution Ave is a joint venture between the United Brotherhood of Carpenters and Joiners of America, a union whose headquarters has been on the site since 1961.



Featured above is the dome at 101 Constitution Ave in Washington, D.C.

One of the first jobs that the team had the privilege of completing at East Coast is Santa Monica College (Math and Science Building) in Santa Monica, California. While the design was handled at Overly prior to the transition, all materials were fabricated at East Coast. The building features a unique, conical shape that utilizes the Overly Bermuda system in a vertical fashion as shown below.



Featured above is the dome on the Santa Monica College Math and Science Building.

The team is excited to feature these completed projects in the coming months and looks forward to further collaborations highlighting the Overly by East Coast products. Plans for expansion have also been considered with hopes of gaining opportunities in new markets across the U.S. and abroad.

In production since 1888, the Overly products have and continue to meet the custom needs of architects nationwide. With a strong foundation and a new team behind it, the possibilities for growth of the Overly by East Coast Metal Systems brand are boundless. If you are going to remember one thing about this time-tested brand, remember that it continues to deliver complex, quality craftsmanship on sophisticated designs that its competitors often won't touch.

For questions about the Overly by East Coast products or how they can benefit your designs, please [reach out to the team](#). Doug, Mike and Kevin are ready to collaborate.

Copyright 2024 East Coast Metal Systems. All Rights Reserved.

CONTACT US



625 Distribution Road
Triadelphia, WV 26059

E: overlyestimating@ecmsinc.net

T: 681-327-2445



Proudly Fabricated in WV

Free Estimates

Detailed Quotes

Fully Customized Materials

Every effort has been made to ensure accuracy, but OVERLY Panel Systems by East Coast Metal Systems makes no guarantees and accepts no responsibility for errors or for information found to be inaccurate in this publication. Usage suggestions are for informational purposes only and may change without notice. The customer is solely responsible for determining product suitability for its intended purpose and use, and compliance with applicable laws, and OVERLY Panel Systems by East Coast assumes no liability in connection therewith.



Copyright OVERLY Panel Systems by East Coast Metal Systems. All Rights Reserved.

