

Plate XP

Architectural Plate Façade System

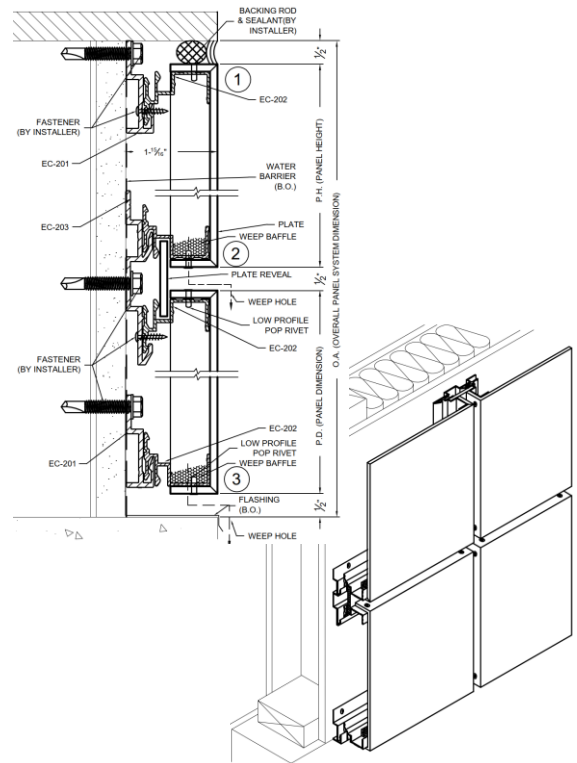
Plate XP (PXP) is the advancement of thick metal exterior/interior cladding, providing designers with creative precision, long-term sustainability and permanence. This open-joint, back-ventilated rainscreen system achieves striking and aesthetic complexity by using solid metal plate sheets with long-term visual consistency & ROI.



Dunbar Senior High School, Washington DC

Features and Benefits

| Features | Benefits |
|------------------------------------|--|
| Customizable Finish Options | Coil coated or Post-fabrication painting available with an array of colors and customizable print-coat configurations |
| Customization | Panels are precision-engineered to meet project-specific requirements from custom shapes to curving and perforation options. |
| Sustainability* | LCA, EPD and LEED information available upon request |
| Efficient Installation | PXP plate sheets are mounted to an aluminum extrusion system designed for adaptivity and custom configuration |
| Warranty(s) | Enjoy peace of mind with multiple warranty options, available when you connect with the Overly team |

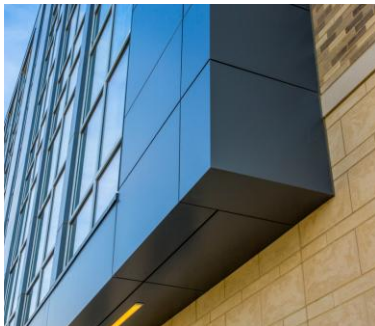


*Reports are not applicable to all substrates, materials, and dimensions. Refer to Overly for verification.

Materials and Sizes

| Material | Minimums W&L | Maximums W&L | Standard Panel Depth | Panel Thickness | Standard Panel Reveal(s) | Finishes |
|-------------------------------|-------------------------|--|------------------------|--|-----------------------------------|--|
| Aluminum (including Anodized) | Width: 4" Length: 4" | Width: 60" Length: 194" (custom available) | 2", (custom available) | 0.125" (1/8") 0.188" (3/16") 0.250" (1/4") | 1/2" – 12", (custom available) | PVDF Standard, Custom, Weathered Patina Prints, Metallics, Micas, and Textures |
| Stainless Steel | Width: 4" Length: 4" | Width: 60" Length: 194" (custom available) | 2", (custom available) | 0.075" (14ga > 12') 0.060" (16ga < 12') | 1/2" – 12", (custom available) | 2B, 4B, Matte, Directional, & Non-Directional Specialized Finishes |
| Copper | Width: 4" Length: 4" | Width: 39" Length: 194" | 2", (custom available) | 0.064" (48oz) 0.086" (64oz) | 1/2" – 12", (custom available) | Cold Rolled, Coated, Textured, & Pre-Weathered |
| Zinc | Width: 4" Length: 4" | Width: 39" Length: 194" | 2", (custom available) | 0.060" (1.5mm) | 1/2" – 12", (custom available) | Back Coated, Natural, Pre-Weathered, & Colored |
| Titanium | Width: 4" Length: 4" | Width: 42" Length: 194" | 2", (custom available) | 0.075" (14ga > 12') 0.060" (16ga < 12') | 1/2" – 12", (custom available) | (Grade 1) available in Mill and Matte Finishes |
| Corten | Width: 4" Length: 4" | Width: 42" Length: 120" (custom available) | 2", (custom available) | 0.120" (1/8") | 1/2" – 12", (custom available) | Natural, Pre-weathered, sealed |

**For customizations, including custom configurations and requests for large panel sizes, please contact Overly. Certain metals and specialty finishes may result in formed panel dimensions smaller than the listed maximum size.*



Dunbar Senior High School, Washington DC



Fifth Ave Place, Pittsburgh PA



UPMC Vision and Rehab Pavilion, Pittsburgh PA



E: overlyestimating@ecmsinc.net

T: 681-327-2445

Every effort has been made to ensure accuracy, but Overly Panel Systems by East Coast Metal Systems makes no guarantees and accepts no responsibility for errors or for information found to be inaccurate in this publication. Usage suggestions are for informational purposes only and may change without notice. The customer is solely responsible for determining product suitability for its intended purpose and use, and compliance with applicable laws, and Overly Panel Systems by East Coast assumes no liability in connection therewith.

Proudly Fabricated in WV
Free Estimates
Detailed Quotes
Fully Customized Materials

